

LINCOLN PLACE

725 ARIZONA AVENUE, SANTA MONICA



OFFICE SPACE FOR LEASE

- MEDITERRANEAN STYLE OFFICE BUILDING COMBINES OLD-WORLD CHARM WITH MODERN DESIGN AND TECHNOLOGY
- TWO LUSH LANDSCAPED COURTYARDS, EACH WITH THEIR OWN ARTISTIC WATER FEATURE
- FRENCH DOORS OPEN OUT ON PRIVATE BALCONIES.
- EVERY WINDOW OPENS, BRINGING IN SANTA MONICA'S FRESH AIR AND OCEAN BREEZE
- IDEAL BAY DEPTHS FOR FLEXIBLE OFFICE PLANNING AND EFFICIENT UTILIZATION
- EASY ACCESS ABUNDANT PARKING WITH ATTENDANT FOR VISITOR PARKING – NO TANDEM SPACES
- A SHORT WALK TO THE MANY FINE RESTAURANTS AND STORES ON THE SANTA MONICA PROMENADE

FOR MORE INFORMATION PLEASE CONTACT:

GREG ECKHARDT
310.395.2663 x103

GECKO@PARCOMMERCIAL.COM

RAFAEL PADILLA
310.395.2663 x102

RAFAEL@PARCOMMERCIAL.COM



LINCOLN PLACE

725 ARIZONA AVENUE, SANTA MONICA



OFFICE SPACE FOR LEASE

ADDRESS: 725 ARIZONA AVENUE , SANTA MONICA, CA 90401

SUITE #304: 2,845 RENTABLE SQUARE FEET (APPROXIMATELY)

RATE: \$4.75 PER SQUARE FOOT, FSG

SUITE #202: 2,598 RENTABLE SQUARE FEET (APPROXIMATELY)

RATE: \$4.65 PER SQUARE FOOT, FSG

TERM: 3-5 YEARS

PARKING: 3/1000 PARKING, \$95/MO UNRESERVED, \$160/MO RESERVED

AVAILABLE: SUITE #304 IS AVAILABLE IMMEDIATELY

SUITE #202 IS AVAILABLE SEPTEMBER 24, 2008

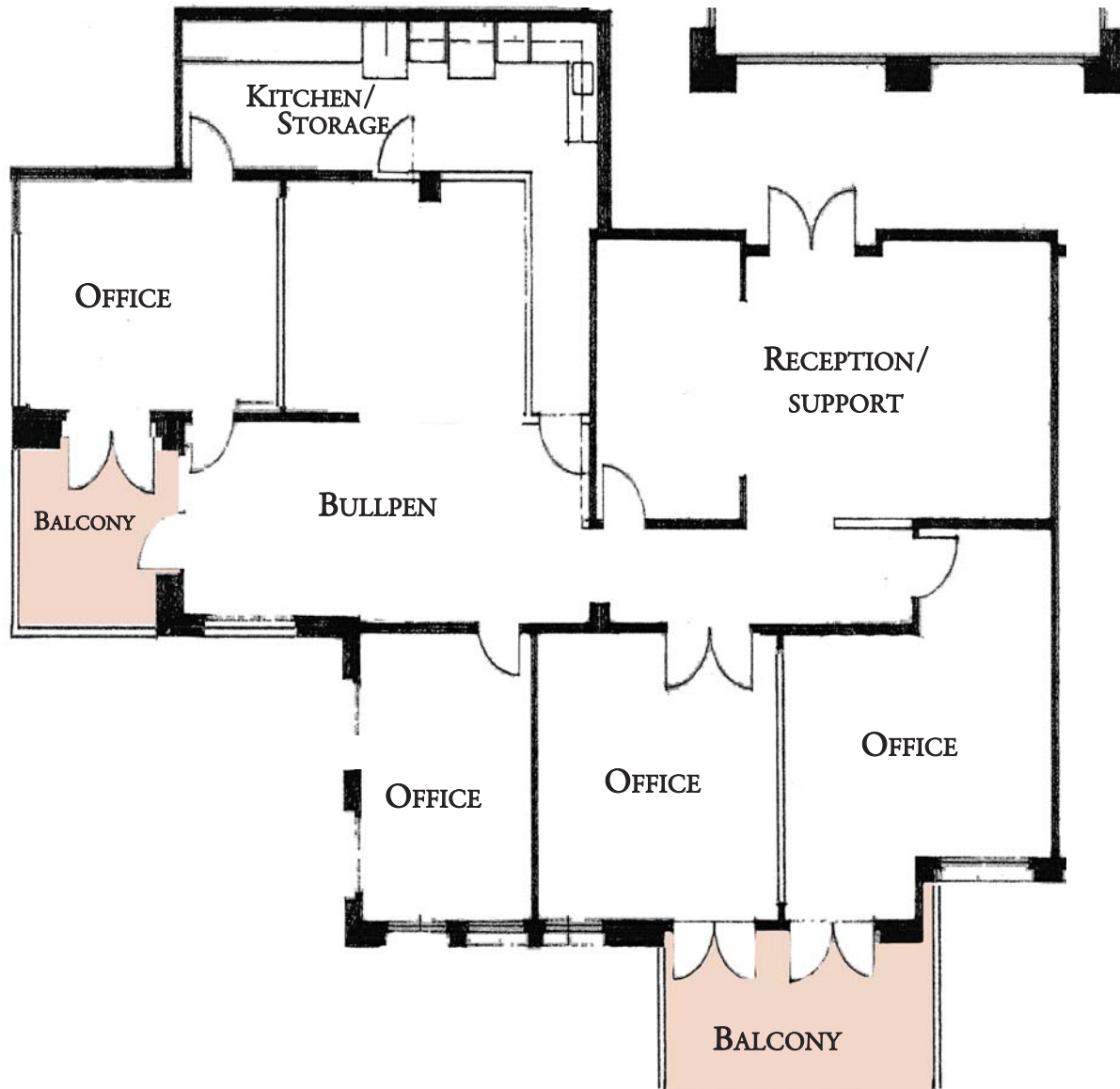


LINCOLN PLACE

725 ARIZONA AVENUE #304, SANTA MONICA



SUITE 304 EXISTING

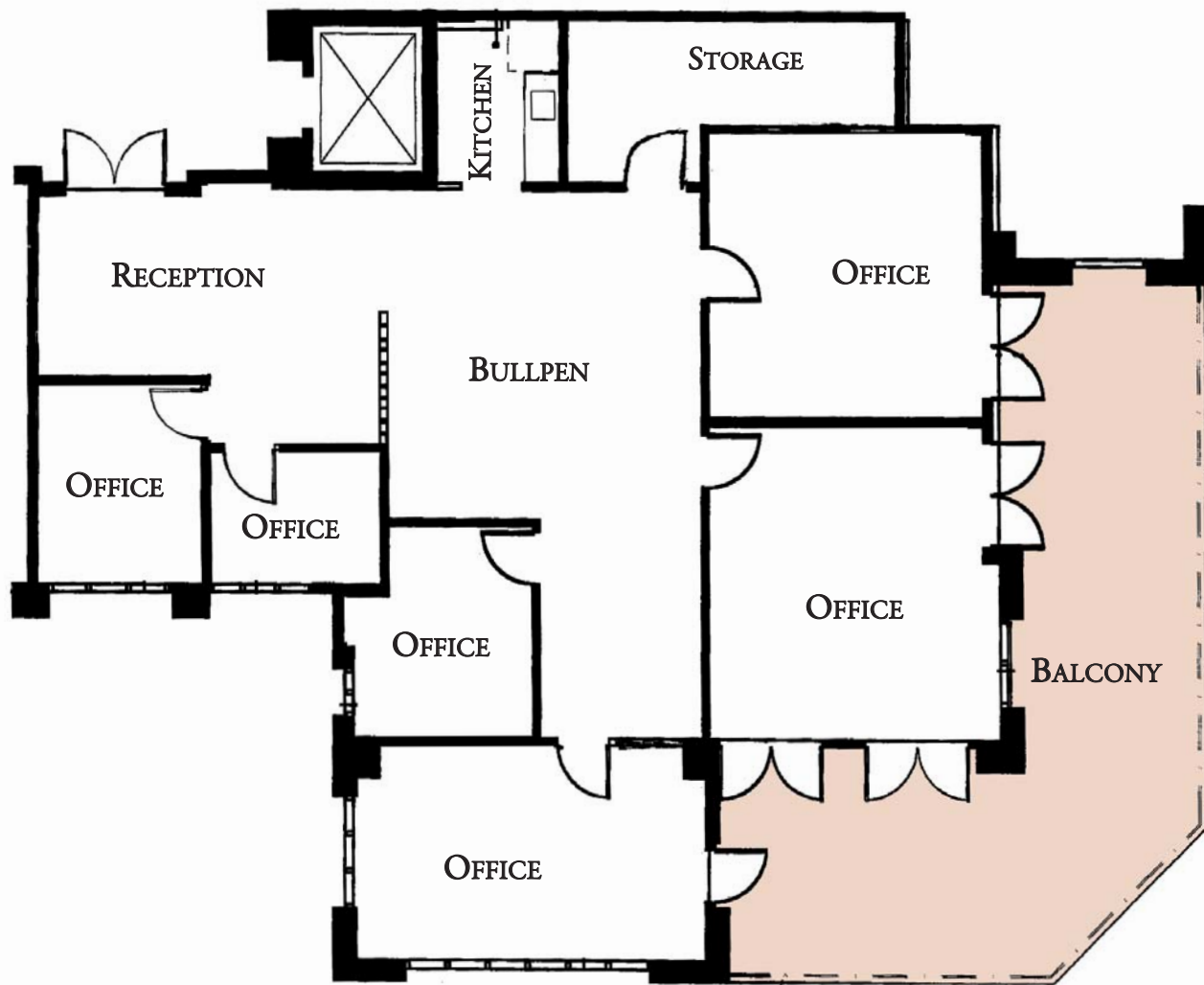


LINCOLN PLACE

725 ARIZONA AVENUE #202, SANTA MONICA



SUITE 202 EXISTING



All information furnished is from sources deemed reliable and which we believe to be correct, but no representation or guarantee is given as to its accuracy and is subject to errors and omissions. All measurements are approximate and have not been verified by Broker. You are advised to conduct an independent investigation to verify all information.
1250 Sixth Street, Suite 303 Santa Monica, California 90401 T 310.395.2663 F 310.395.2683 www.parcommercial.com